

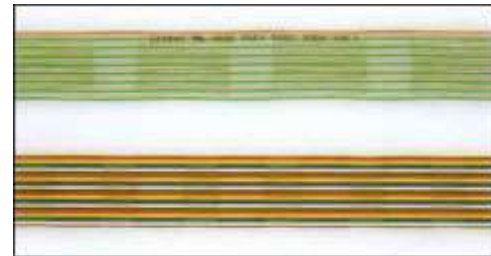
Products

Sudare type OKIFLEX (UL2651)

UL STYLE NO.2651 105degrees 300V

Features

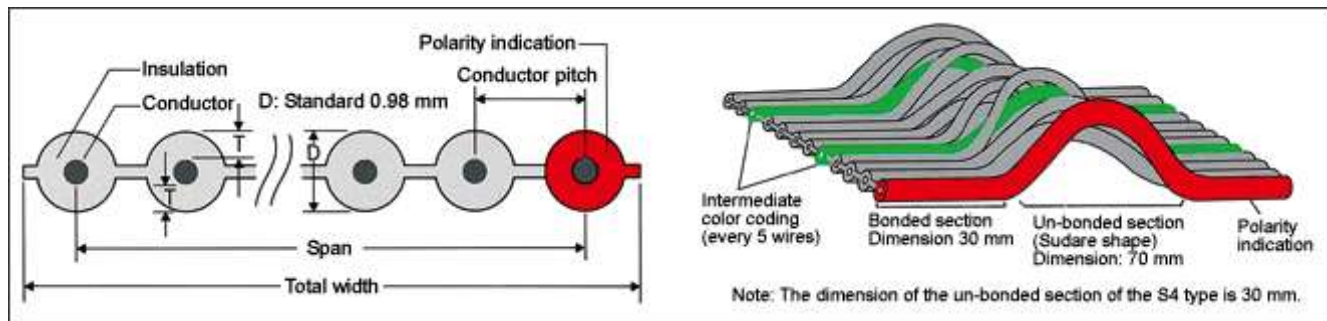
- This cable is of a continuous structure in which the cores have bonded sections and un-bonded sections at constant intervals in the length direction (bonded section: 30mm/un-bonded section: 70mm). It is optimum for fixed wiring inside a case of complicated shape.
- We can also produce printed cables bearing the CSA or F mark to order.
- This product is environmentally friendly. The insulation does not contain specific bromide fire retardants (PBDE, PBB) or heavy metals such as Pb, Cr6+, Cd or Hg. In addition, the cable conforms to the RoHS standard (which restricts the use of specific toxic substances contained in electrical and electronic equipment).



Applications

Optimum for internal fixed wiring of computers, peripheral equipment, communication equipment, office equipment, and so on.

Shape



Characteristics

Conductor resistance Ω /km (20degrees)	222 or less	Characteristic impedance*1 Ω	Approx. 108
Insulation resistance M Ω -km (20degrees)	100 or more	Propagation delay*1 ns/m	Approx. 5.0

Withstand voltage Vrms/min	2000	Near-end crosstalk*1 %	Approx. 4.0
Capacitance*1 pF/m	Approx. 51	Flame resistance characteristics	VW-1

*1 :The values for the measured conductors are according to the GSG mode.

Item name and core colors	
FLEX-S ()-7/0.127 2651P	Red - Gray - Gray - Gray - Green ... core 1 = Red, Core 5nth core wire = Green, Other cores = Gray
FLEX-S4 ()-7/0.127 2651	Brown - Red - Orange - Yellow - Green - Blue - Purple - Gray - White - Black ... (Repeated hereafter.)

*2 :Enter the number of pairs according to the type configuration table below in ([1]).

Type configuration table						
Number of cores	Conductor	Insulation	span mm	Total width mm	Conductor pitch mm	Standard length
8	7/0.127 (AWG28)	Elastic PVC	8.89	10.2	1.27	61m/reel (200feet)
10			11.43	12.7		
14			16.51	17.8		
16			19.05	20.3		
20			24.13	25.4		
24			29.21	30.5		
25			30.48	31.8		
26			31.75	33.0		
30			36.83	38.1		
34			41.91	43.2		
36			44.45	45.7		
37			45.72	47.0		
40			49.53	50.8		
50			62.23	63.5		
60			74.93	76.2		
64	80.01	81.3				